

AMPATH Conference Presentations

- [Conference Home](#)
- [Agenda](#)
- [Participant List](#)
- [Presentations](#)
- [REUNA Meeting](#)



First AMPATH International Conference, Valdivia, Chile

Click on the presentation subject to open the PowerPoint or right-click and "Save As" to download to your computer

Note: Some presentations are very large!

- John McGowan (FIU) - [Formal Welcome; Keynote address](#)
- Julio Ibarra (FIU) - [Meeting Goals & Objectives; AMPATH Status Report; Users Group Presentation](#)
- Alan Blatecky (NSF) - [CISE/ANIR Future Directions \(](#)
- Heidi Alvarez (FIU) - [AMPATH and international rese](#)

Presenters listed alphabetically by last name:

- Heather Boyles (Internet2) - [Internet2 and International Networks](#)
- Robert Bradford (NASA) - [International Space Station](#)
- Carlos Casaus (CUDI) - [Mexico Networking Update](#)
- Steve Corbato (Internet2) - [Abilene](#)
- Guy Cormier (UPR) - [PRISAnet](#)
- Sarah Darocha (CNTI) - [Networking in Venezuela](#)
- Yasmin Detres (NASA Ames Research Center) - [Mari Virtual Laboratory](#)

Virtual Laboratory

- Marta Ferraro (Universidad de Buenos Aires) - Utah-Aires Grid for Chemical Physics
- Carlos Frank (RETINA) - RETINA Update and new Pr
- Jose Garcia (Gemini Observatory) - Gemini Update
- Alexandre Grojsgold (RNP2) - Brazilian Networking
- Andrew Johnson (STARTAP) - StarLight
- Sandra Lopez - Red Nacional Universitaria, Colombia
- Michael McClain (FIU) - Andean Amazon Basin resea
- Rick McMullen (Indiana/Global NOC) - Global Terabit Network (GTRN) - Given by Steve Corbato
- Harvey Newman (CalTech) - High Energy and Nuclear Grids and Networks, via VRVS (5.7MB)
- Naphtali Rishe (FIU) - Terrafly (5.2MB)
- Surendra Saxena (FIU) - Study of Matter under Extr Conditions (14MB)
- Dr. Alexander Szalay (Johns Hopkins University) - V Observatory
- Tom Troland (UKY) - Arecibo Observatory (19.8MB)
- Florencio Utreras (REUNA) - Networking in Chile
- Mario Vaz (UFRJ & CBFP), Brazilian High Energy Phy (7.0MB)
- Eduardo Vera (Universidad de Chile) & Hisao Uose (I Access Nova Collaboration Project (3.6MB)

[SITE MAP >>](#) [CONTACT >>](#)

© 2002 Florida International University | Up

TerraFly

via Internet2, AMPATH,
and the NAP of the Americas

High Performance Database Research Center
and NASA Regional Applications Center
at Florida International University

Naphtali Rishe, Director



who are we?

- High Performance Database Research Center / NASA Regional Applications Center in the School of Computer Science
- Located at Florida International University in Miami, Florida
- Under direction of Dr. Naphtali Rishe
- 100 researchers and staff



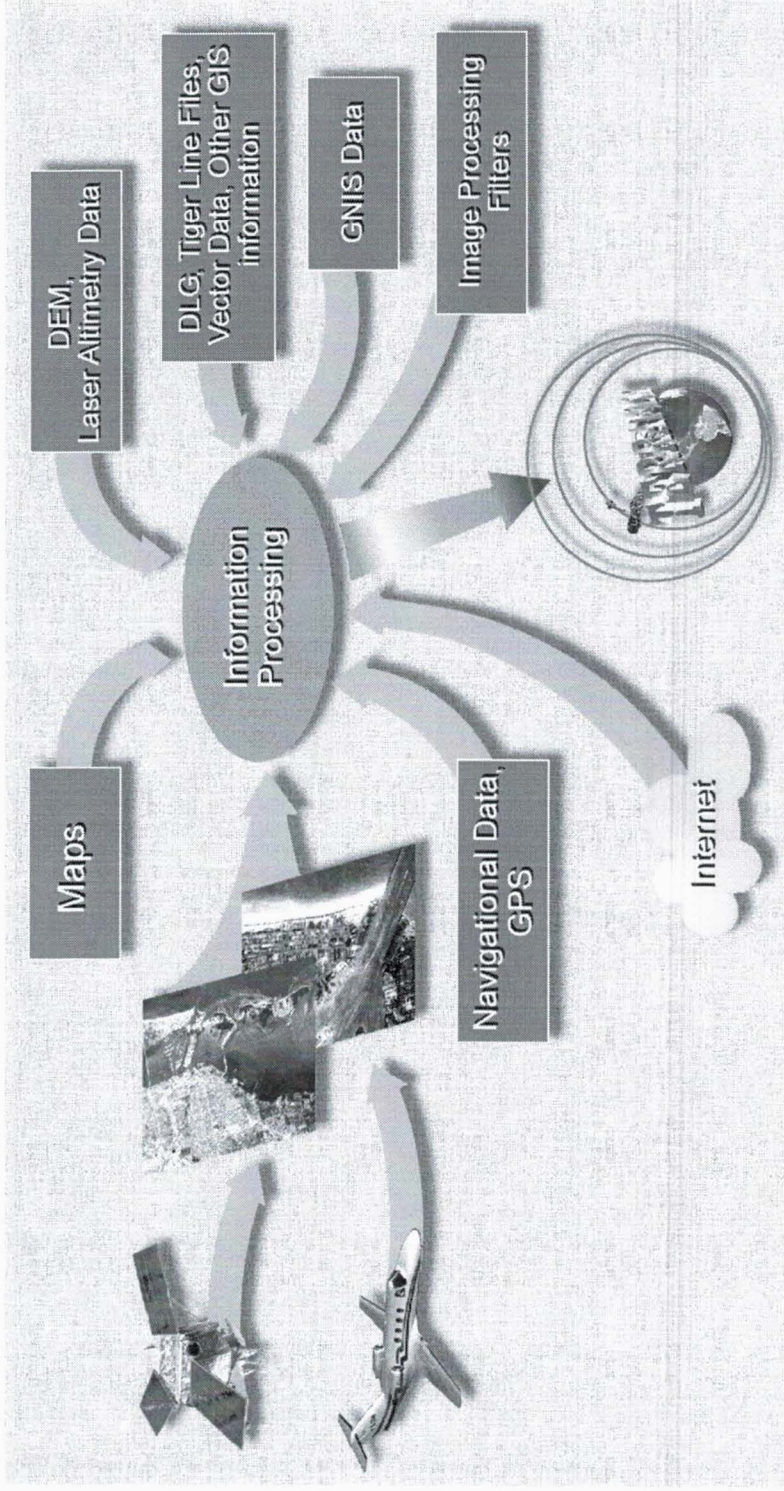


our collaborators

- \$27 million in research support from our primary collaborators:
 - National Aeronautics and Space Administration (NASA)
 - National Science Foundation (NSF)
 - United States Geological Survey (USGS)
 - International Business Machines (IBM)



what's in TerraFly?



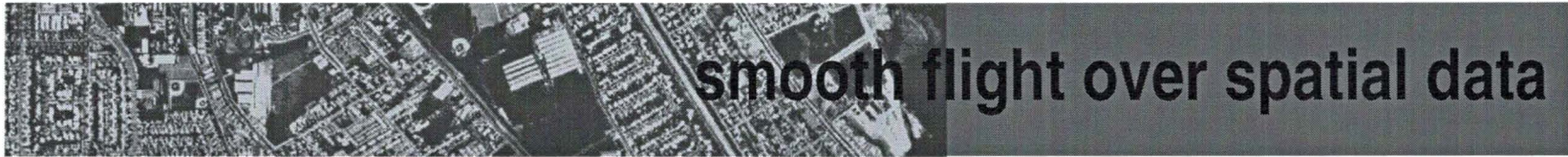


web-based

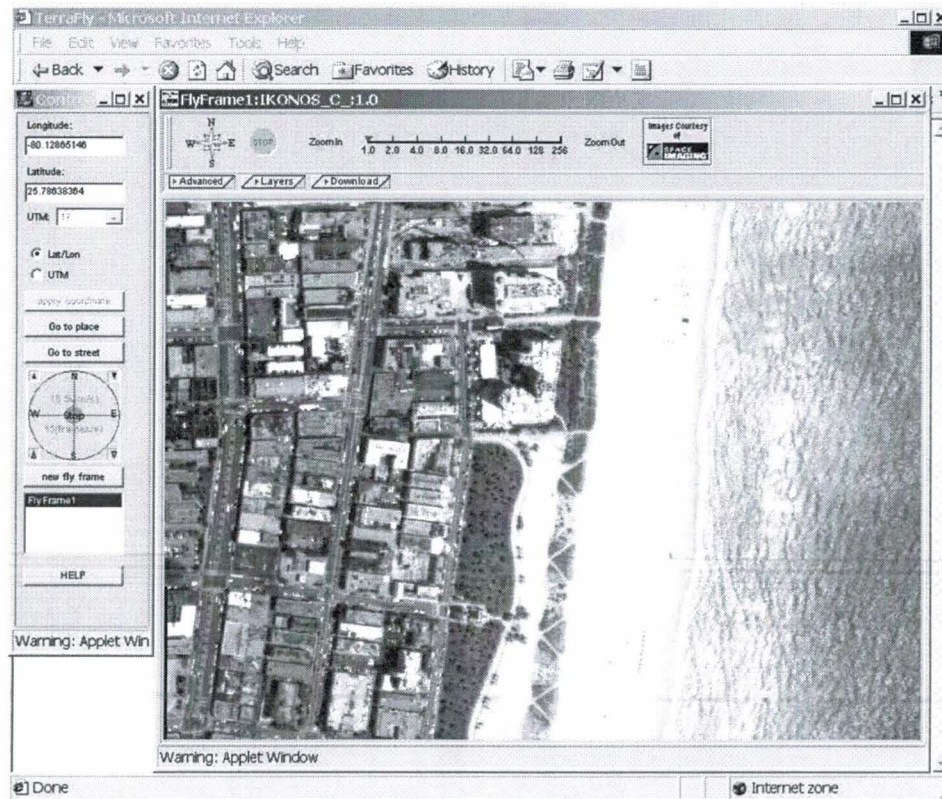


Infrared image over North-East Rondonia, Brazil





- Streaming incremental tiles to a Java applet allows users to “fly” over data





multiple windows

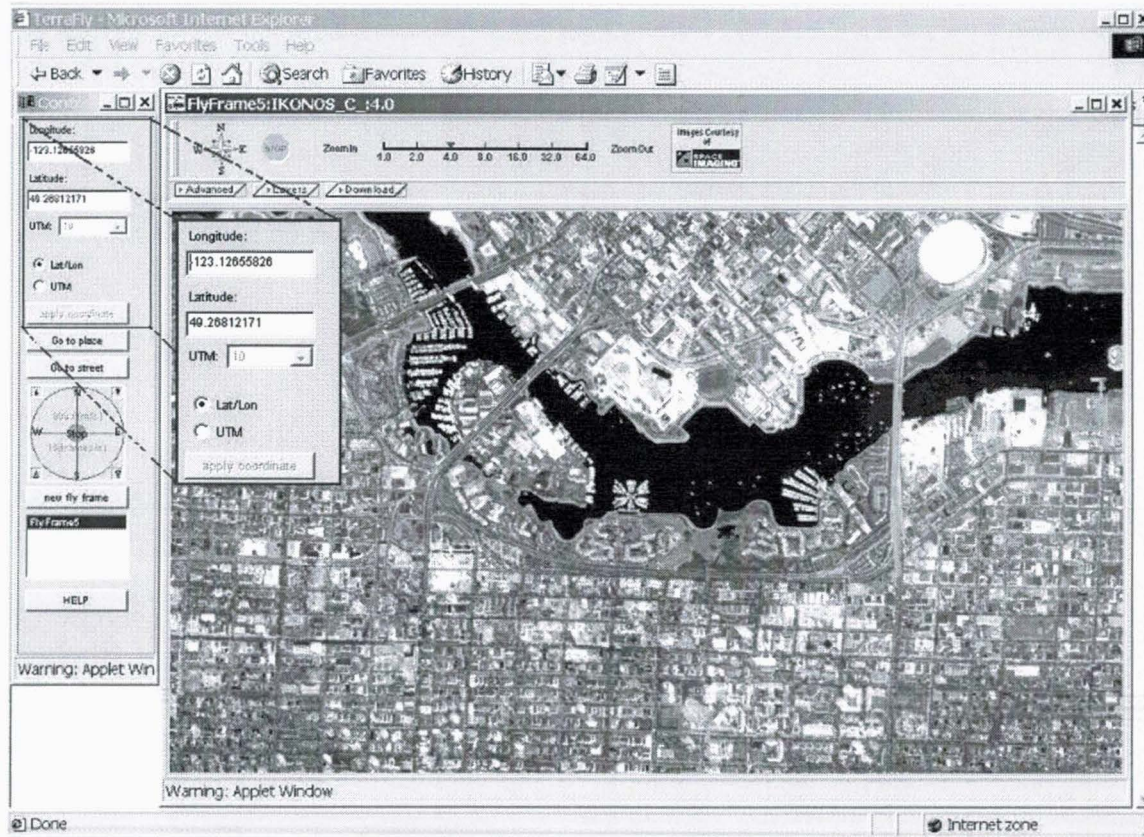


- Multiple data type support





geolocation ID



- Updates geographical coordinates as you “fly”
- Provides a Go-To coordinate feature





go to place

- Go-To a specific place of interest using its name

Warning: Applet Window

| | Longitude | Latitude | Distance | PlaceName | County | State | Placetype |
|---|-----------|----------|----------|-------------|--------|-------|-----------|
| 1 | 81.782 | 24.555 | 0.204 | Key West | Monroe | FL | pop |
| 2 | 81.81 | 24.548 | 1.825 | Fort Taylor | Monroe | FL | pop |

Warning: Applet Window

Done Internet zone





place identifier

Warning: Applet Window

| | |
|----------------|-----------------------------|
| X: | 324283.118 |
| Y: | 4306700.357 |
| Zone: | 18 |
| North: | true |
| Longitude: | -77.0260787 |
| Latitude: | 38.8916167 |
| Distance: | 0.041 |
| Placename: | National Museum of building |
| Distance_PPL: | 0.87 |
| Placename_PPL: | Chinatown (subdivi |
| County: | District of Columbia |
| State: | DC |

goto

info

Warning: Applet Window

- Find the closest place of interest and populated place

- Find the exact coordinates of any point in the image, even during flight





address lookup

- Find the coordinates and Go-To a specific street address

The screenshot shows a web browser window titled 'Terrafly - Microsoft Internet Explorer'. The address bar shows 'FlyFrame9@USGS_AP_CTR_11.0'. The main content area displays an aerial map with a grid overlay. A 'GotoStreet' dialog box is open, allowing users to search for a specific street address. The dialog box contains the following fields:

- StreetAddress: 11200 SW 8 St
- City: Miami
- State: FL
- Zip Code: (empty)

Below these fields is a table with the following data:

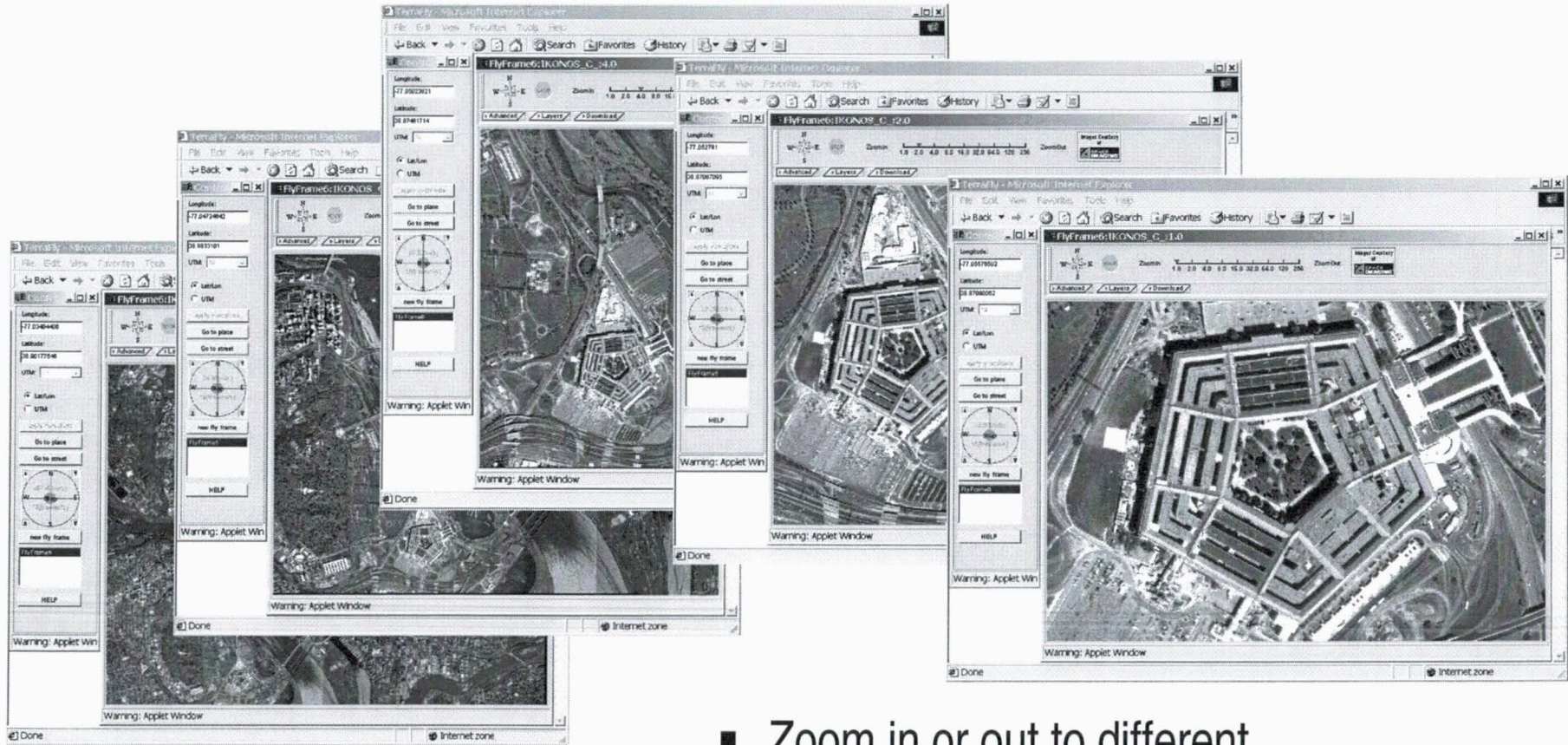
| StreetAddress | City State and Zip | Longitude | Latitude |
|---------------|--------------------|-----------|----------|
| 11200 SW 8 St | Miami FL 33156 | -80.377 | 25.761 |

The dialog box also includes 'Query', 'OK', and 'Close' buttons. At the bottom of the browser window, there are warnings: 'Warning: Apple' and 'Warning: Applet Window'.





zoom in / zoom out



- Zoom in or out to different resolutions





downloading data

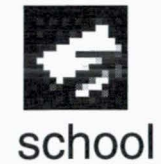
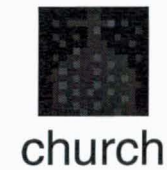
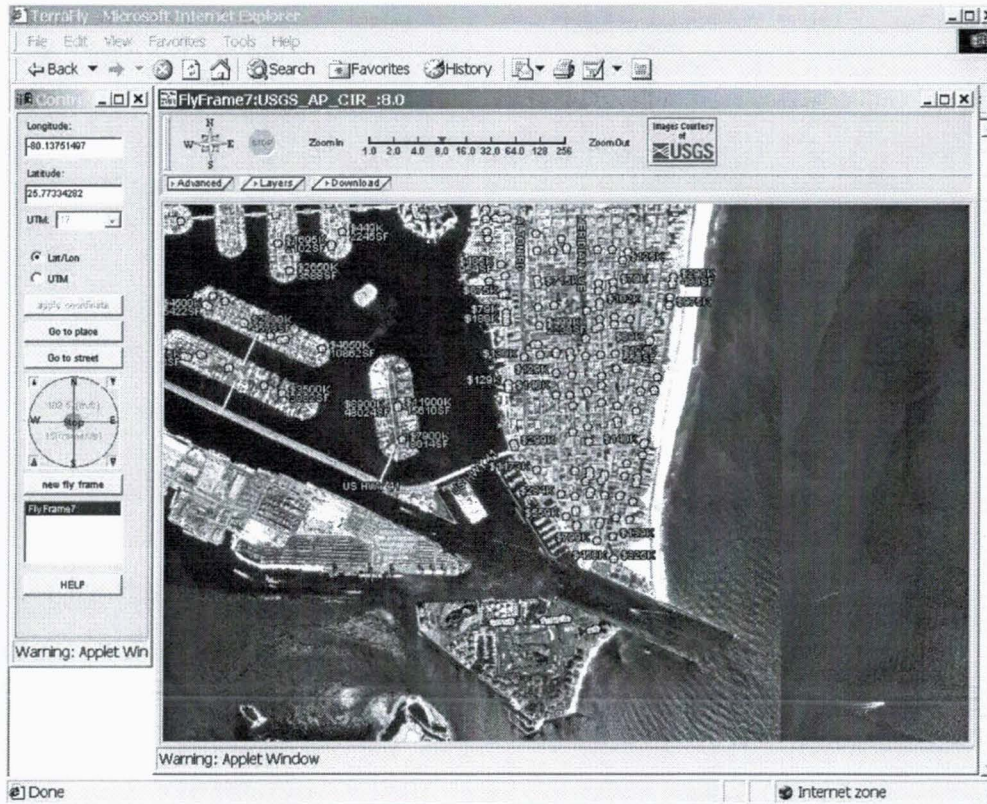


- Select an area of interest with our easy to use GUI
- Receive the data in your choice of file format and media





information overlay



- Features from the DB can be highlighted
- Data can be overlaid with different sources





real estate

| Place Name | Street Address | UnitN | City | State | Zip |
|------------------------|----------------|-------|-------------|-------|-------|
| VILLAGGIO ON SOUTH BEA | 1455 OCEAN DR | | MIAMI BEACH | FL | 33136 |



- Real Estate Listings information
- Full brochure available on line





hotels

| Place Name | Street Address | City | Rating | Currency |
|----------------------|-------------------|-----------------------|--------|----------|
| FONTAINEBLEAU HILTON | 4441 COLLINS AVE. | MIAMI BEACH, FL 33140 | 3.0 | USD |

Guest Room

Pool

Exterior



- Access to detailed hotel information and reservations link





disaster management

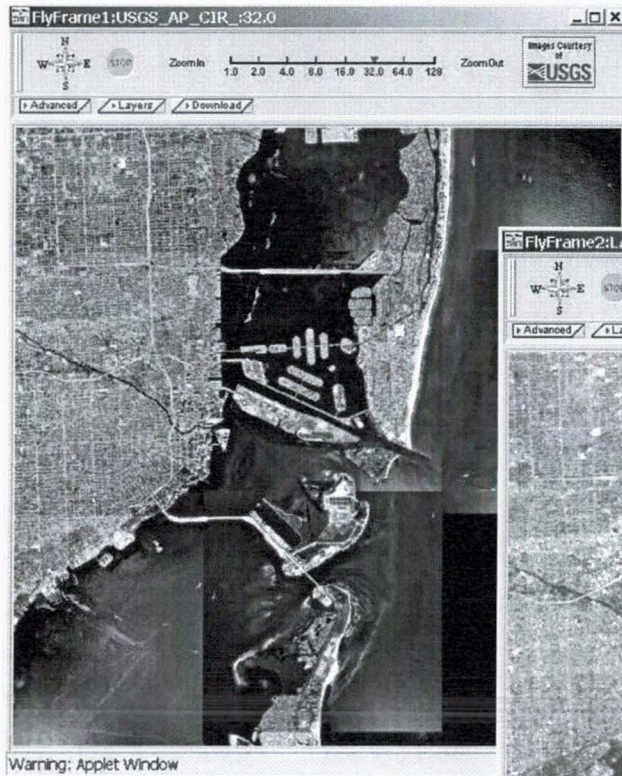


- TerraFly used to determine the extent of flooding in a South Florida neighborhood

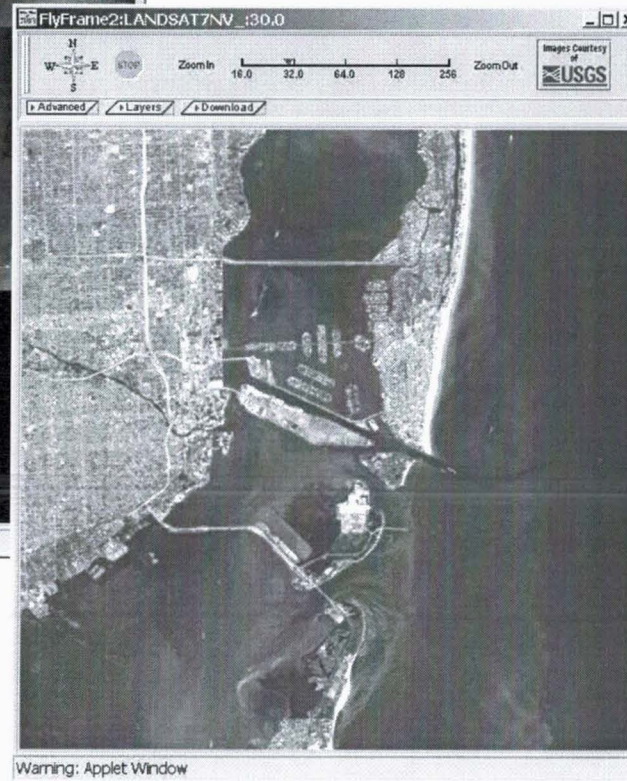




fly over US



- Through USGS CRADA we have access to entire US Aerial Photography



- Landsat 7 data over Populated Global Landmass

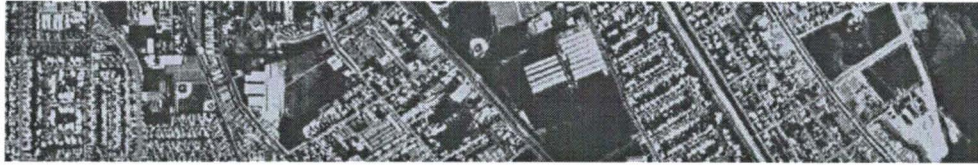




internet connectivity

- DS3 45 Mbps to the Internet
- OC3 155 Mbps to Internet-2
- NAP 1000 Mbps to Tier 1 ISPs
- Ampath four DS3 45 Mbps to Latin America (Chile, Argentina and 2 to Brazil)
- 1 TB at NAP $\xrightarrow{155 \text{ Mbps}}$ 20 TB at HPDRC





AmPath benefits

- Bandwidth Intensive Application
- High Bandwidth client = Positive TerraFly Experience
- AmPath will enhance the TerraFly experience to South and Central America clients
- Achieved 33 Mbps sustained data transfer rate between USGS EROS Data Center in Sioux Falls, North Dakota and FIU via Internet 2





project status

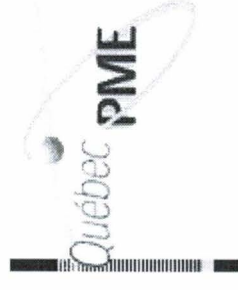
- USGS CRADA Agreement in Place
- Powerful IBM Servers to house terabytes of data
- Complete US coverage within 1 year
- Global landmass to follow
- Media event held at FIU in late October 2001
- 10,000 unique users per day to TerraFly web site





flagship project

- TerraFly has had extensive media coverage.



The Miami Herald



nature scienceupdate



experience TerraFly

- at TerraFly.fiu.edu or www.TerraFly.com

TerraFly - Microsoft Internet Explorer

File Edit View Favorites Tools Help

Back Forward Stop Search Favorites History

Address http://www.terrafly.com/ Go Links

TerraFly GET USGS DATA HERE

Industries TerraFly Data About Us

Virtually "FLY" over the entire United States

TerraFly changes the way you view your world. Simply enter an address, and our system will put you at the controls of a new and innovative way to explore your digital earth.

Enter Street Address:
City: State:
or Enter ZIP Code:
FLY NOW!

Recommended Starting Points:
Miami Beach, FL. Washington, DC. More

Powered by: IBM USGS OpenGIS MEMBER

Contact Us Feedback Terms of Use Privacy Policy

© Copyright: 1997-2001, TerraFly.com. All rights reserved.

Done Internet zone

